



CANINE HOOPERS OF CANADA

## **CHC Video Trial #006**

**April 18 - 27, 2025**

Entries Open **April 1, 2025**

Entries Close **Apr. 15, 2025**

Online entry only

[www.caninehooperscanada.com](http://www.caninehooperscanada.com)

payments to

[caninehooperscanada@gmail.com](mailto:caninehooperscanada@gmail.com)

All points earned will count towards your CHC titles

**Videos must be submitted by  
midnight Apr. 27, 2025**

NO EXCEPTIONS

**Please read entire premium**

## **Canine Hoopers Of Canada**

### **Video Trials**

Courses designed by:

CHC Judge

Debbie Vassallo (40x60)

### ***Beginner Level Courses***

***2 Hoopers, 2 Parkour, 2 Tungo***

Ring area sizes

**40X60**

**DHB OR Challenge Lines**

Equipment required for each course: see pg. 4

### **Entry Fee**

**\$15 per dog per class**

**OR \$39 for 3/ \$72 for 6**

You must be a CHC member

Dogs must have a CHC ID #

Entries after closing date \$15 per class per dog

**No later than Apr. 24<sup>th</sup> By midnight**

**No entries will be accepted after the 24<sup>th</sup>.**

### **About CHC Video Trials**

This is an opportunity to enjoy Hoopers with your dog without having to participate in a physical trial, for those who have access to the equipment and proper space

### **Ring Size**

40X60

Course set up + **distances** must be as accurate as possible

### **Course Design and Challenges**

Courses will range from 15 to 20 obstacles, with a distance challenge using a Distance Handling Box OR Challenge Lines (will be specified on map). It is encouraged that you train and practice, before submitting your videos

### **Qualifying Runs + Bonus Points**

Each clean/qualifying run will receive 5 points plus any bonus points earned. Be sure to read the judge's briefing (provided with course maps) on how to earn bonus points for each course/run

All points will count towards CHC class titles, earned by video or live trials.

### **Equipment**

All hoopers equipment should be safe. If you're not sure, just ask (see page 3 for more info)

### **Requirements for participating in the trial**

- 1 – You must have access to the ring size
- 2 – DHB or CL must be clearly marked
- 3 – You must have access to proper/safe equipment
- 4 – Must be able to clearly video your runs
- 5 – Must have a You Tube or Vimeo account to upload your video
- 6 – Must have access to Facebook to post your video link

**7 - READ the entire Premium!**

### **Course Maps**

Course Maps will be emailed in PDF form, Feb. 20<sup>th</sup>. If you don't receive them by noon on the first day of the trial, please contact CHC.

### **Entering**

To enter the video trial for one or more courses, submit the entry form, then etransfer your fees.

You will be granted access to the CHC Facebook trial group from Feb. 20<sup>th</sup>. Please upload your clean run videos under the relevant class post.

Follow the link below to request to join:

**[CHC Video Trial #006 - 40x60](#)**

Be sure to read all the page posts for important information before uploading your clean runs

## General Rules

- Dogs and handlers must be CHC members
- It is your responsibility to request to join the Trial FB group
- Courses must be set up according to the instructions in the course briefing. Be sure your set up flows and the distance between obstacles is correct
- The Distance Handling Box OR Challenge Lines must be clearly marked
- You may practice the courses
- Please upload clean runs only
- There are no placements for video submissions, only clean run points + any earned bonus points
- The video must show 5 seconds before dog crosses the start line up to 5 seconds after the dog crosses the finish line with no editing (you may use this time to unleash and leash your dog)
- Video should be no longer than 90 seconds (maximum course time including 5 sec. before and after)
- Only the competing dog and handler should be within the ring area
- Toys and treats must be outside the ring area. Rewarding inside the ring will result in elimination
- Upload each video to your YouTube or Vimeo account; then, post the link for each video in the Facebook group. Be sure to read the posts for instructions
- When you post your video link, you must comment with the following information for the run to be judged:
  - Class Level, Name and Size Division (i.e. Beginner Parkour, Med.)
  - Handler Name and CHC Handler Number
  - Dog's Name and CHC Dog ID Number
- There are no refunds once an entry has been submitted and paid for
- Video submissions must be posted to the Facebook page by the trial deadline – midnight **Apr. 27<sup>th</sup>**

By submitting your entry, you have agreed to all the information below:

- Refunds are not available for video trials so please be aware before you enter and pay
- CHC rules apply unless otherwise stated. Canine Hoopers of Canada Official Rules and Guidelines are available for download on the CHC website
- All dogs and handlers must be registered with CHC in order to compete. If you or your dog is not registered, please register online at [www.caninehooperscanada.com](http://www.caninehooperscanada.com)
- Dogs under 15 months of age on the last day of the trial are not eligible to compete
- Course maps will be emailed the day before and on the first day of the trial
- It's up to you to post your videos before the trial deadline
- Any points earned will count towards CHC Titles
- You realize that your video(s) will be available for others to view in the Facebook group and on social media

# CHC Video Trail #006

**Apr. 18 - 27, 2025**

Facebook Link: [CHC Video Trial #006 - 40x60](#)

**Entries Open Apr. 1, 2025**

**Entries Close Apr. 15, 2025**

## **40X60 Ring Size**

<b><u>Beginner Hoopers 1 + 2</u></b>	<b><u>Beginner Parkour 1 + 2</u></b>	<b><u>Beginner Tungo 1 + 2</u></b>
5 hoops, 2 barrels	2 hoops, 3 barrels, 1 tunnel, 1 gate	1 hoop, 4 barrels, 1 tunnel, 1 gate

**All equipment must be safe for your dog! Acceptable/substitute list below**

**\$15 per dog, per class**

**OR**

**\$39 per dog for 3 classes/ \$72 for 6 classes**

**Entries after closing date \$15 per dog, per class**

**Enter CHC Video Trial #006: <https://www.caninehooperscanada.com/chc-sanctioned-trials>**

---

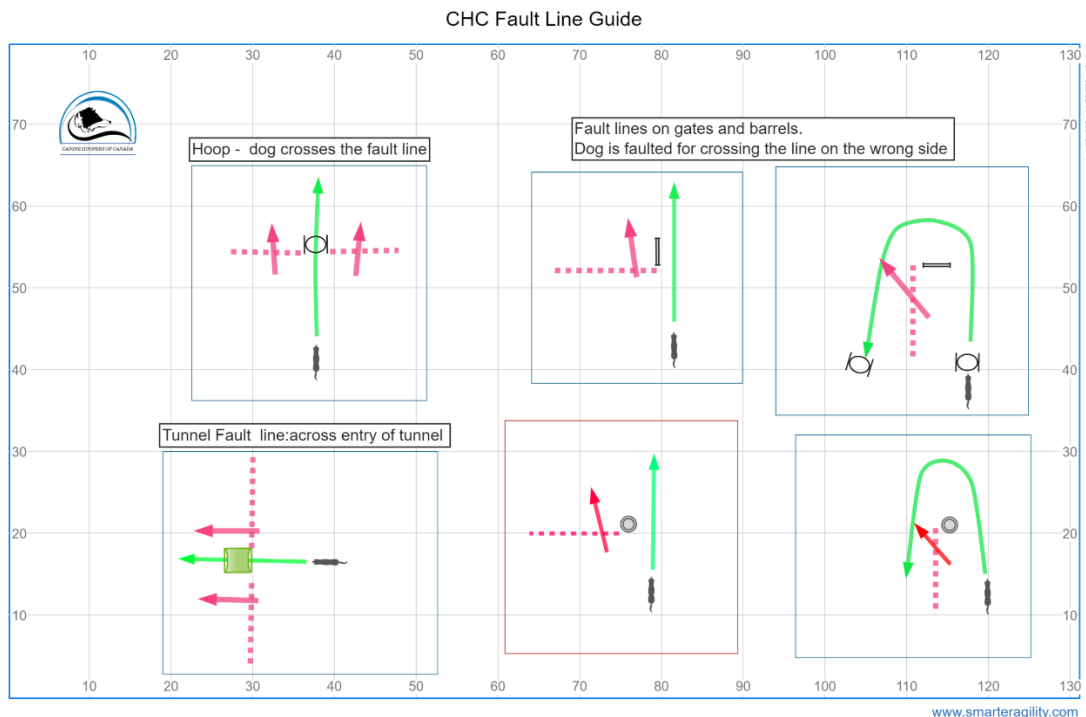
### **Acceptable/substitute Equipment:**

- All equipment must be safe for your dog
- Homemade hoops, as long as they have no sharp edges and can be displaced by the dog without injury.
- Barrels: should look like barrels (garbage bin, pop up laundry hamper etc.), be taller than your dog and have no sharp edges. Recommend 18" diameter + up
- Home made gates, as long as they have no sharp edges and dog can clearly see handler from either side
- Tunnels must be no longer than 6 ft. Bottom tunnels must be bagged (weighted) so they don't move. Bottomless tunnels should be stable with no sharp edges

## Scoring (CHC rules 2024)

### Faults

- Dog crosses 'fault line' (see map)
- Dog displaces an obstacle or timer (unless the judge determines it was caused by the dog's tail)
- Handler intentionally touches the dog
- Dog stops all motion (freezes) for 3 or more seconds
- Dog misses an obstacle – (counted as missed once the dog takes the next obstacle)
- Dog takes an off course obstacle or takes an obstacle in the wrong direction
- Handler carrying something in their hand (other than a mobility aid) (elimination)
- Toys or food within the ring area (elimination)



### CHC Dog Sizes and Measuring

CHC has 3 size divisions – small, medium, and large. Dogs must be measured to ensure they compete in the correct size category. Dogs are measured using the foreleg between wrist and elbow, otherwise known as the ulna. Measurement is from the carpal joint (wrist) up to the elbow. (See diagram below.)

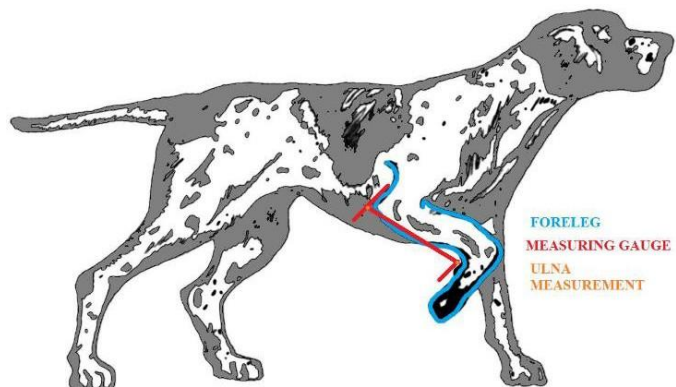
By following the guide and diagrams below, owners can measure their own dogs and add its measure to their application when registering with Canine Hoopers of Canada. However, if a size category seems questionable, a trial official can ask for the dog to be re-measured.

#### Ulna Length

5 inches and under  
5 to 7 inches  
Over 7 inches

#### Size Category

Small  
Medium  
Large



Reminder:

- The video must show 5 seconds before dog crosses the start line up to 5 seconds after the dog crosses the finish line with no editing (you may use this time to unleash and leash your dog)
- Video should be no longer than 90 seconds
- Only the competing dog and handler should be within the ring area, on the video
- Toys and food must be outside the ring area
- Camera placement should show handler, DHB, all equipment and dog's running line

Upload each video to your YouTube or Vimeo account; then, post the link for each video in the Facebook group. Be sure to read the posts for instructions: [CHC Video Trial #006 - 40x60](#)

- When you post your video link, you must comment with the following information for the run to be judged:
  - Class Level, Name and Size Division
  - Handler Name and CHC Handler Number
  - Dog's Name and CHC Dog ID Number

---

**Rules of Conduct** - All competitors shall conduct themselves in a professional and sportsmanlike manner. Handlers also promise to keep their own and their dog's welfare and best interests in mind when training and competing. Each competitor acknowledges through their entry to the CHC event that their participation is a privilege and not a right.

Competitors acknowledge and agree to comply with all CHC rules and regulations and all rules and regulations in this premium and agree to accept any sanctions that may be imposed for failure to comply. The video judge has responsibility for determining when it is appropriate to fault a dog, excuse a dog and competitor based on matters related to competitor misconduct. You cannot challenge a video judges call for any reason and or request clarification on a call.

Cyber bullying of any kind towards CHC, competitors, judges, helpers or volunteers will not be tolerated. Examples of cyber bullying include but are not limited to, communications that seek to intimidate, manipulate, falsely discredit, put down, try to control, rudely confront, demand, and comments that try to incite further issues.

